

STANDARD EQUIPMENT

- AM/FM Radio
- Arm, 7'3" (2.2m) with vertical ribbed rock guard
- Audible warning system for high coolant temperature, low engine oil pressure, clogged airfilter and oil replacement interval
- Automatic swing and travel parking brakes
- Automatic Swing Priority (trenching system)
- Automatic warm up function
- Belly pan guard
- Boom, 19'8" (6.0m)
- Boom and arm holding (anti-drift) valves
- Breaker valve with flow control
- Cab is die formed, modular steel full-vision, sound insulated, with viscous silicon-filled mounts, windshield wiper, adjustable reclining operator's seat with lap safety belt, heater and defroster, cigarette lighter, ashtray, floor mat, cab light, control level lock, tinted skylight with damper cylinder.
- Climate control air conditioning/heater system
- Double pump flow for bucket in and out
- Dual element air cleaner
- Electric horn
- Emergency electronic bypass with mechanical throttle control
- Engine shuts down automatically for low oil pressure
- Heavy duty batteries (2 x 12 volt 136 AH)
- Heavy lift
- Hydraulic track adjusters
- Independent Travel
- Lifetime lubricated track rollers, idlers and sprockets, grease cylinder track adjuster, track link disassembly mechanism, longpitch sealed and strutted track links. Mitsubishi engine 6D16-TLEB
- Mode selection - simplified and useful
Assist Mode - fuzzy logic control of mode selector reacts to job conditions automatically

- Manual Mode - full performance, default mode
- Breaker Mode - Electronic breaker flow control
- Multi-display monitor includes: system status, engine preheat status, low engine oil pressure warning, engine coolant temperature level warning, engine air cleaner restriction, battery charging system, low fuel level, CPU error indicator lamp, hour meter, fuel level gauge, water temperature gauge and tachometer
- Power Boost without time limit
- Power outlet, 24 volt to 12 volt converter
- Proportional auto accel system
- Removable cleanout screen for radiator
- Removable travel levers with toe tabs
- Self-lubricating bushing in boom foot and boom hoist cylinders
- Service diagnostic: 68 item service diagnostics, including ability to read pilot pressure from the operator's cab
- Service diagnostic: 100-event fault code memory
- Starting motor (24 v/5.0 kW) 35 amp alternator
- Straight travel system
- Suspension seat - 7-way adjustable
- Swing and travel automatic parking brakes
- Swing flashers
- Swing Priority (trenching system) functions automatically
- Swing shockless valve
- Three front and two rear work lights
- Track, 31.5" (800mm) semi-triple grouser shoes
- Travel Alarm
- Two lever control for boom, arm, bucket and swing: pilot operated wrist controls and foot pedals
- Two speed travel, automatic shift
- Warm up function of engine and hydraulic system functions automatically

NOTE: Due to our policy of continual product improvement, all designs and specifications are subject to change without advance notice.

KOBELCO

Your competitive edge.

SK330LC	
WT	80,000 lb
HP	238 @ 2,200 RPM
BKT CAP	2.5-3.8 cu yd

Mass Excavator



Dynamic Acera Hydraulic Excavator

KOBELCO

Your competitive edge.

Sales & Product Support Offices

12755 S. Kirkwood Drive
Stafford, Texas 77477 USA
Phone: 281.240.4800
Fax: 281.240.4906

Headquarters & Manufacturing

501 Richardson Road.
Calhoun, Georgia 30701 USA
Phone: 706.629.5572
Fax: 706.629.3952

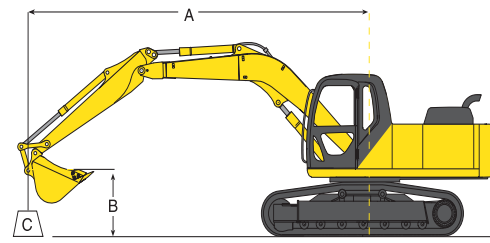
SK330LC

SPECS

SK330LC

LIFTING CAPACITIES

		SK330LC Arm: 7'2.5" (2.2 m) Bucket: 3.8 cu yd (1.2 m³) SAE heaped Bucket Weight: 4,391 lb (1,991 kg)							
		10' (3.0 m)		15' (4.6 m)		20' (6.1 m)		25' (7.6 m)	
A	B	C		C		C		C	
		lb	kg	lb	kg	lb	kg	lb	kg
20'	(6.1 m)					*25,670	17,320		
						*11,664	7,855		
15'	(4.6 m)			*35,440	*28,190	*25,180	17,440	*19,810	11,790
				*16,075	*12,787	*11,421	7,911	*8,986	5,348
10'	(3.0 m)					*25,000	17,490	*19,560	11,850
						*11,340	7,933	*8,872	5,375
5'	(1.5 m)					*24,980	17,490	*19,530	11,860
						*11,330	7,933	*8,859	5,380
Ground Level				*36,250	*28,150	*25,090	17,470	*19,710	11,820
				*16,440	*12,769	*11,380	7,924	*8,940	5,361
-5'	(-1.5 m)	*58,710	*58,510	*35,340	*28,220	*25,460	17,370		
		*26,630	*26,540	*16,030	*12,800	*11,548	7,879		
-10'	(-3.0 m)	*58,780	*58,780	28,070	28,070	*26,200	17,180		
		*26,662	*26,662	12,732	12,732	*11,884	7,793		

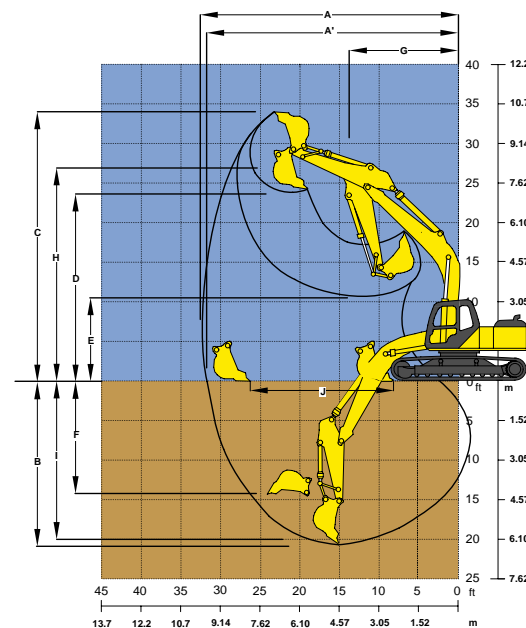


- Rating over front**
- Rating over side/360 degrees**
- A** Reach swing centerline to bucket hook
- B** Bucket hook height above/below ground
- C** Lifting capacities in pounds and kilograms
- Max discharge pressure: 5,470 psi (385 kg/cm²)
- Track shoe: 31.5" (800 mm) Triple grouser
- Boom: 19'8" (6.0 m)

WORKING RANGES

Unit: ft-in (m)

ATTACHMENTS	Standard Arm	
	7'3"	(2.2)
A Max digging reach	32'10"	(10.0)
A ¹ Max digging reach at ground level	31'9"	(9.68)
B Max digging depth	20'9"	(6.32)
C Max digging height	34'5"	(10.49)
D Max dumping clearance	23'2"	(7.06)
E Min dumping clearance	11'10"	(3.61)
F Max vertical wall digging depth	13'8"	(4.16)
G Min front swing radius	13'7"	(4.14)
H Height at min swing radius	26'9"	(8.15)
I Digging depth for 8' flat bottom	20'5"	(6.22)
J Horiz. digging stroke at ground level	19'0"	(5.76)



SPECIFICATION SUMMARY

GENERAL			
Operating weight with Bucket	lb (kg)	80,000	(36,281)
Bucket Capacity Range	cu yd (m³)	2.5-3.8	(1.91-2.87)
ENGINE			
Make and Model	Mitsubishi	6D16-TLEB	
Displacement	cu in (L)	460	(7.5)
Horsepower SAE NET HP/RPM (KW/RPM)		238@2200	(177@2200)
WORKING RANGES (Std. Arm)			
Standard Arm	ft-in (m)	7'3"	(2.2)
Bucket Digging Force	lb (kg)	58,432	(26,500)
Arm Digging Force	lb (kg)	52,479	(23,800)
Ground Level Reach	ft-in (m)	31'9"	(9.68)
Digging Depth	ft-in (m)	20'9"	(6.32)
Dumping Height	ft-in (m)	23'2"	(7.06)
Vertical Wall Digging Depth	ft-in (m)	13'8"	(4.16)
Max. Lift Capacity-Side	lb (kg)	17,470	(7,924)
@ 20' Radius & Ground Level-Front	lb (kg)	25,090	(11,380)
HYDRAULIC SYSTEM			
Hydraulic	No & type	2VP+1FG	
Rated Oil Flow	gpm (L/m)	2x67+5.5	(2x254+21)
Operating Pressure Implement-psi (kg/cm²)		4,980	(350)
Travel-psi (kg/cm²)		4,980	(350)
Swing-psi (kg/cm²)		3,990	(280)
Heavy Lift/ Power Boost-psi (kg/cm²)		5,470	(385)
UNDERCARRIAGE			
Track Overall Length	ft-in (m)	16'4"	(4.98)
Track Overall Width w/Std. Shoe	ft-in (m)	11'2"	(3.40)
Track Shoe Selection	in (mm)	31.5"	(800)
Travel Speed	mph (km/h)	3.6/2.1	(5.8/3.4)
Draw Bar Pull	lb (kg)	63,800	(28,940)
Ground Bearing Pressure	psi (kg/cm²)	7.25	(0.51)
Ground Clearance	in (mm)	19.7	(500)
SWING			
Swing Speed	rpm	9.1	
Swing Torque	lbs (kN•m)	87,844	(119)
Tail Swing Radius	ft-in (m)	11'6"	(3.5)
SHIPPING DIMENSIONS			
Height	ft-in (m)	11'0"	(3.35)
Width w/Std. Shoe	ft-in (m)	11'2"	(3.40)
Length	ft-in (m)	35'3"	(11.20)
REFILL CAPACITIES			
Fuel Tank	gal (L)	148	(560)
Hydraulic Reservoir	gal (L)	54.4	(206)

OPTIONAL EQUIPMENT

- Arm with rock guard - 10'10" (3.3m)
- Boom and arm load (lock) holding valves
- Breaker piping and controls
- Combined one/two way auxiliary hydraulics (one or two pump) with piping and hand/foot controls
- Control pattern changer (ISO/BHL)
- Double bar shoes - 27.6" (700mm)
- Double bar shoes - 36" (900mm)
- Front rain visor
- High & wide lower
- Large selection of buckets
- Low flow rotation circuit
- One way auxiliary hydraulics with piping and hand/foot controls (one pump)
- Perforated engine side panels
- Quick Couplers
- Vandalism guards

